

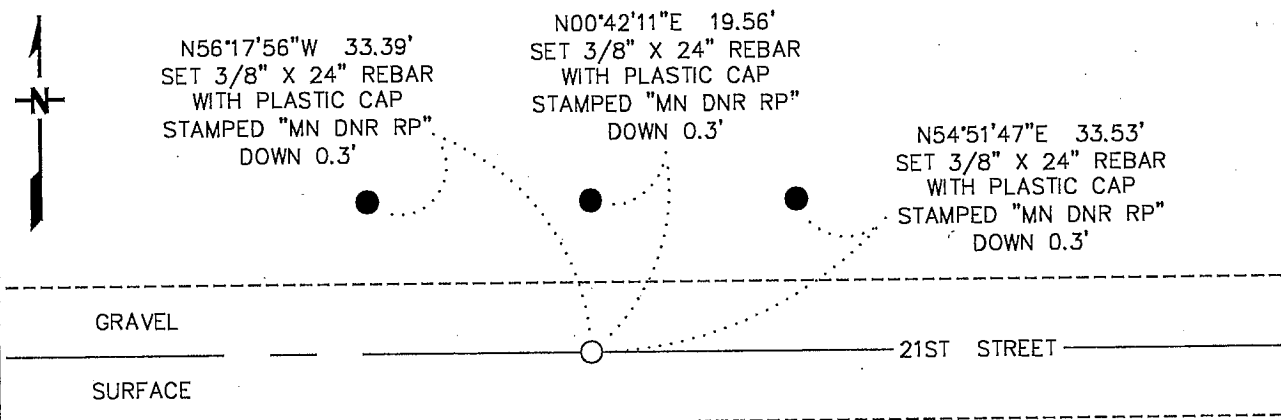
Index No. R-23

# CERTIFICATE OF LOCATION OF GOVERNMENT CORNER

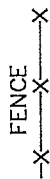
NORTH QUARTER Corner of Section 25, Township 105 N, Range 39 W  
5TH Principal Meridian, State of Minnesota, County of MURRAY

At the corner location shown on the sketch:

- On \_\_\_\_\_ found a \_\_\_\_\_  
DATE
- left monument as found,  lowered monument,  removed manument (explain)
- On 6/29/16 Placed a 3/4" X 24" REBAR WITH PLASTIC CAP STAMPED  
DATE "MN DNR LS 17003", DOWN 0.5'



MURRAY COUNTY  
 COORDINATE SYSTEM  
 NAD 1983 1996 ADJ.  
 N = 110629.966  
 E = 577530.956



MONU IS:  
 ON CENTERLINE OF  
 EAST-WEST ROAD IN  
 LINE WITH FENCE SOUTH

BEARINGS ARE COUNTY ORIENTATION

Statement of evidence for this corner location is on back of this page.

OCTOBER 2016  
WMA09007

I hereby certify that this plan, specification, or report was prepared by me or under my direct supervision and that I am a duly Licensed Land Surveyor under the laws of the State of Minnesota.

SIGNATURE Bruce W. Shepperd DATE 12/6/16 License Number 17003  
 BRUCE W. SHEPPERD

North Quarter Corner of Section 25, Township 105 North, Range 39 West

The DNR Division of Lands and Minerals contacted the following for survey information:

Website - mngeo.state.mn.us for GLO plat and field notes

Website - murray-countymn.com for section and quarter section corner information

Murray County Recorder's Office

Zieske Land Surveying Inc. of Windom

1861 U.S. General Land Office notes, obtained from mngeo.state.mn.us, show the corner marked with a charred post, in a mound with a trench as per instructions.

No A Surveyor's Record Book A, page 54, obtained from the County Recorder's Office,  
Date surveyor not indicated, shows a symbol for the corner but does not indicate what kind of monument was found or set. The corner is shown:

40.60 chains (2679.60 feet) from the northeast corner of Section 25

36.60 chains (2613.60 feet) from the center of Section 25

No A Surveyor's Record Book, obtained from murray-countymn.com, surveyor not  
Date indicated, shows a symbol for the corner but does not indicate what kind of monument was found or set. The corner is shown:

40.60 chains (2679.60 feet) from the northeast corner of Section 25

36.60 chains (2613.60 feet) from the center of Section 25

2016 June 29, the DNR Division of Lands and Minerals located the center line of an east-west gravel road and a fence line south in the area of the corner. Scanned a 10 foot diameter area with an electronic metal detector, the center being the center line of the road and fence south but no metal attraction was obtained.

Then an 8 foot north-south by 10 foot east-west by 3 foot deep hole was dug with a backhoe, the center being the center line of the road and fence south but no evidence of a monument was found. The bottom of the hole was scanned with an electronic metal detector but no metal attraction was obtained.

Then a ¾ inch by 24 inch rebar with a plastic cap stamped "MN DNR LS 17003" was set on the center line of the east-west road and in line with a fence south and was found to be:

2675.80 feet from the northeast corner of Section 25

2645.25 feet from a spike found in the area of the northwest corner of Section 25

Analysis of the above information led the DNR Division of Lands and Minerals to conclude that the ¾ inch by 24 inch rebar with a plastic cap stamped "MN DNR LS 170003" set on the center line of an east-west road and in line with a fence south marks the obliterated location of the corner.